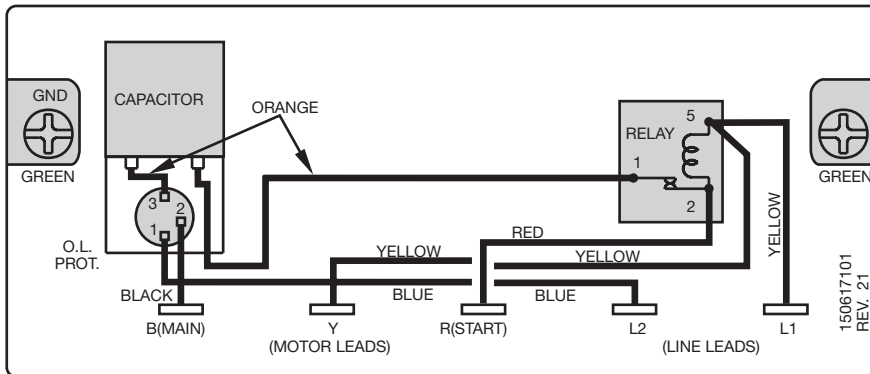




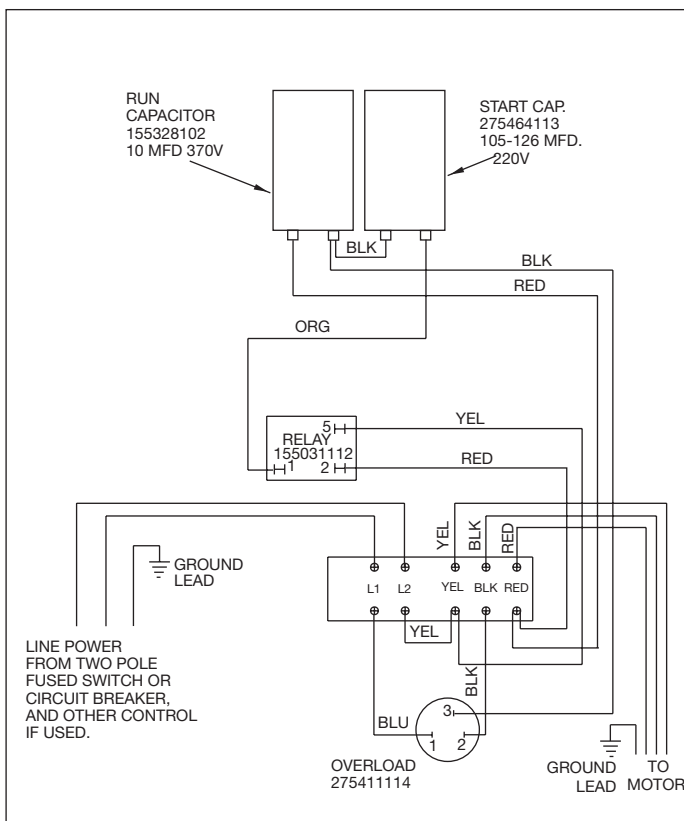
# Single-Phase Motors & Controls

## MAINTENANCE

### Control Box Wiring Diagrams



**0.25 – 0.75kW**  
**1/3 – 1 HP 4"**  
 280 373 0119



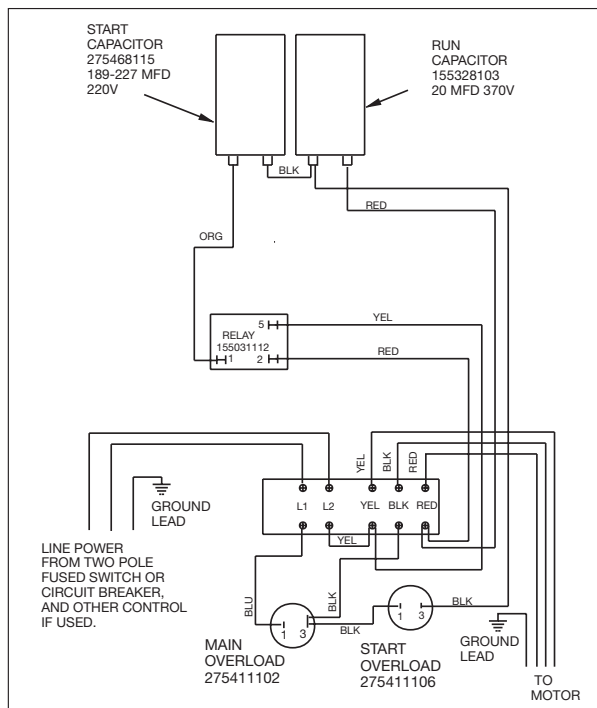
**1.1kW**  
**1 1/2 HP**  
 282 360 8119

	3 Wire			PSC
	AUST	EUR	USA	EUR
Main / Run Winding	Blue	Blue/Grey	Black	Blue/Grey
Start / Aux Winding	White	Black	Red	Brown
Common	Red	Brown	Yellow	Black

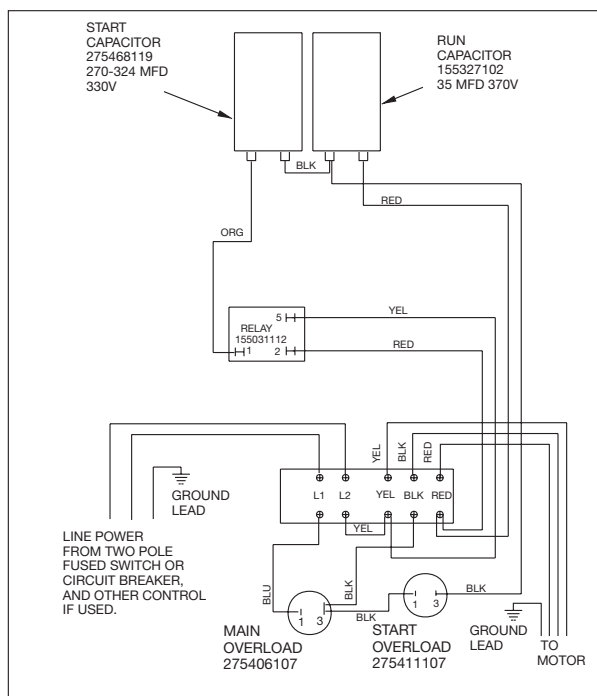


# Single-Phase Motors & Controls

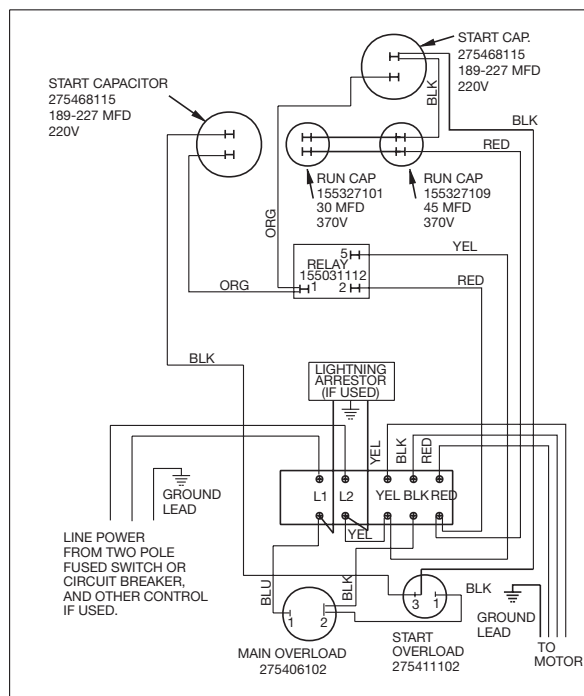
## MAINTENANCE



**1.5kW**  
**2 HP**  
282 361 8119



**2.2kW**  
**3 HP**  
282 362 8110



**3.7kW**  
**5 HP**  
282 363 9010